



3P Power Contactor AC3:9A 1NO AC230V 50/60Hz Main circuit: Screw Auxiliary circuit: Screw

<b>product brand name</b>	SINOVA
<b>product designation</b>	Power contactor
<b>General technical data</b>	
<b>size of contactor</b>	0
product extension auxiliary switch	Yes
power loss [W] for rated value of the current at AC in hot operating state	7.5 W
• per pole	2.5 W
<b>insulation voltage</b>	
• of main circuit with degree of pollution 3 rated value	1 000 V
• of auxiliary circuit with degree of pollution 3 rated value	1 000 V
<b>surge voltage resistance</b>	
• of main circuit rated value	6 kV
• of auxiliary circuit rated value	6 kV
<b>protection class IP</b>	
• on the front	IP20
<b>mechanical service life (operating cycles)</b>	
• of contactor typical	10 000 000
<b>reference code according to IEC 81346-2</b>	Q
<b>Substance Prohibitance (Date)</b>	07/01/2022
<b>Weight</b>	0.354 kg
<b>Ambient conditions</b>	
installation altitude at height above sea level maximum	2 000 m
<b>ambient temperature</b>	
• during operation	-5 ... +55 °C
• during storage	-25 ... +70 °C
<b>relative humidity minimum</b>	10 %
<b>relative humidity at 55 °C according to IEC 60068-2-30 maximum</b>	95 %
<b>Main circuit</b>	
<b>number of poles for main current circuit</b>	3
<b>number of NO contacts for main contacts</b>	3
operating voltage at AC-3 rated value maximum	690 V
<b>operational current</b>	
• at AC-1 at 400 V at ambient temperature 40 °C rated value	25 A
• at AC-1 up to 690 V	
— at ambient temperature 40 °C rated value	25 A
— at ambient temperature 60 °C rated value	19 A
• at AC-3	
— at 400 V rated value	9 A

— at 690 V rated value	5.2 A
<b>operating power</b>	
• at AC-3	
— at 400 V rated value	4 kW
— at 690 V rated value	5.5 kW
<b>no-load switching frequency</b>	
• at AC	1 800 1/h
<b>operating frequency</b>	
• at AC-1 maximum	600 1/h
• at AC-3 maximum	750 1/h
<b>Control circuit/ Control</b>	
<b>type of voltage of the control supply voltage</b>	AC
<b>control supply voltage at AC</b>	
• at 50 Hz rated value	230 V
• at 60 Hz rated value	230 V
<b>operating range factor control supply voltage rated value of magnet coil at AC</b>	
• at 50 Hz	0.85 ... 1.1
• at 60 Hz	0.85 ... 1.1
<b>apparent pick-up power of magnet coil at AC</b>	
• at 50 Hz	80 VA
• at 60 Hz	80 VA
<b>inductive power factor with closing power of the coil</b>	
• at 50 Hz	0.75
• at 60 Hz	0.75
<b>apparent holding power of magnet coil at AC</b>	
• at 50 Hz	12 VA
• at 60 Hz	11 VA
<b>inductive power factor with the holding power of the coil</b>	
• at 50 Hz	0.3
• at 60 Hz	0.3
closing delay at AC	9 ... 25 ms
opening delay at AC	4 ... 15 ms
<b>Auxiliary circuit</b>	
<b>number of NO contacts for auxiliary contacts</b>	
• instantaneous contact	1
operational current at AC-12 maximum	10 A
<b>operational current at AC-15</b>	
• at 230 V rated value	6 A
• at 400 V rated value	3 A
• at 500 V rated value	2 A
• at 690 V rated value	1 A
<b>operational current at DC-12</b>	
• at 24 V rated value	6 A
• at 110 V rated value	3 A
• at 220 V rated value	1 A
<b>operational current at DC-13</b>	
• at 24 V rated value	6 A
• at 110 V rated value	1 A
• at 220 V rated value	0.3 A
• at 600 V rated value	0.1 A
<b>Short-circuit protection</b>	
<b>design of the fuse link</b>	
• for short-circuit protection of the main circuit	
— with type of coordination 1 required	fuse gG: 32 A
— with type of assignment 2 required	fuse gG: 25 A
• for short-circuit protection of the auxiliary switch required	fuse gG: 10 A
<b>mounting position</b>	22.5° inclination forward and backward & 360° rotation, in relation to normal vertical mounting plane
<b>fastening method</b>	screw and snap-on mounting onto 35 mm DIN rail according to DIN EN 60715
<b>height</b>	74.5 mm

<b>width</b>	45 mm
<b>depth</b>	82 mm
<b>Connections/ Terminals</b>	
<b>type of electrical connection</b>	
<ul style="list-style-type: none"> <li>• for main current circuit</li> <li>• for auxiliary and control circuit</li> </ul>	screw-type terminals screw-type terminals
<b>type of connectable conductor cross-sections for main contacts</b>	
<ul style="list-style-type: none"> <li>• solid or stranded</li> <li>• finely stranded with core end processing</li> </ul>	1x (1 ... 4 mm <sup>2</sup> ), 2x (1 ... 4 mm <sup>2</sup> ) 1x (1 ... 4 mm <sup>2</sup> ), 2x (1 ... 1.5 mm <sup>2</sup> )
<b>type of connectable conductor cross-sections</b>	
<ul style="list-style-type: none"> <li>• for auxiliary contacts               <ul style="list-style-type: none"> <li>— solid or stranded</li> <li>— finely stranded with core end processing</li> </ul> </li> </ul>	1x (1 ... 4 mm <sup>2</sup> ), 2x (1 ... 4 mm <sup>2</sup> ) 1x (1 ... 2.5 mm <sup>2</sup> ), 2x (1 ... 1.5 mm <sup>2</sup> )
<b>tightening torque</b>	
<ul style="list-style-type: none"> <li>• for main contacts with screw-type terminals</li> <li>• for auxiliary contacts with screw-type terminals</li> </ul>	1.2 N·m 1.2 N·m
<b>design of the thread of the connection screw</b>	
<ul style="list-style-type: none"> <li>• for main contacts</li> <li>• of the auxiliary and control contacts</li> </ul>	M3.5 M3.5

#### Approvals Certificates

General Product Approval	Test Certificates	other	Environment
--------------------------	-------------------	-------	-------------



[Type Test Certificates/Test Report](#)

[Confirmation](#)

[Environmental Confirmations](#)

#### Further information

##### Information on the packaging

<https://support.industry.siemens.com/cs/ww/en/view/109813875>

##### Information- and Downloadcenter (Catalogs, Brochures,...)

<https://www.siemens.com/ic10>

##### Industry Mall (Online ordering system)

<https://mall.industry.siemens.com/mall/en/en/Catalog/product?mlfb=3MT7010-0AA10-0AL2>

##### Cax online generator

<http://support.automation.siemens.com/WW/CAXorder/default.aspx?lang=en&mlfb=3MT7010-0AA10-0AL2>

##### Service&Support (Manuals, Certificates, Characteristics, FAQs,...)

<https://support.industry.siemens.com/cs/ww/en/ps/3MT7010-0AA10-0AL2>

##### Image database (product images, 2D dimension drawings, 3D models, device circuit diagrams, EPLAN macros, ...)

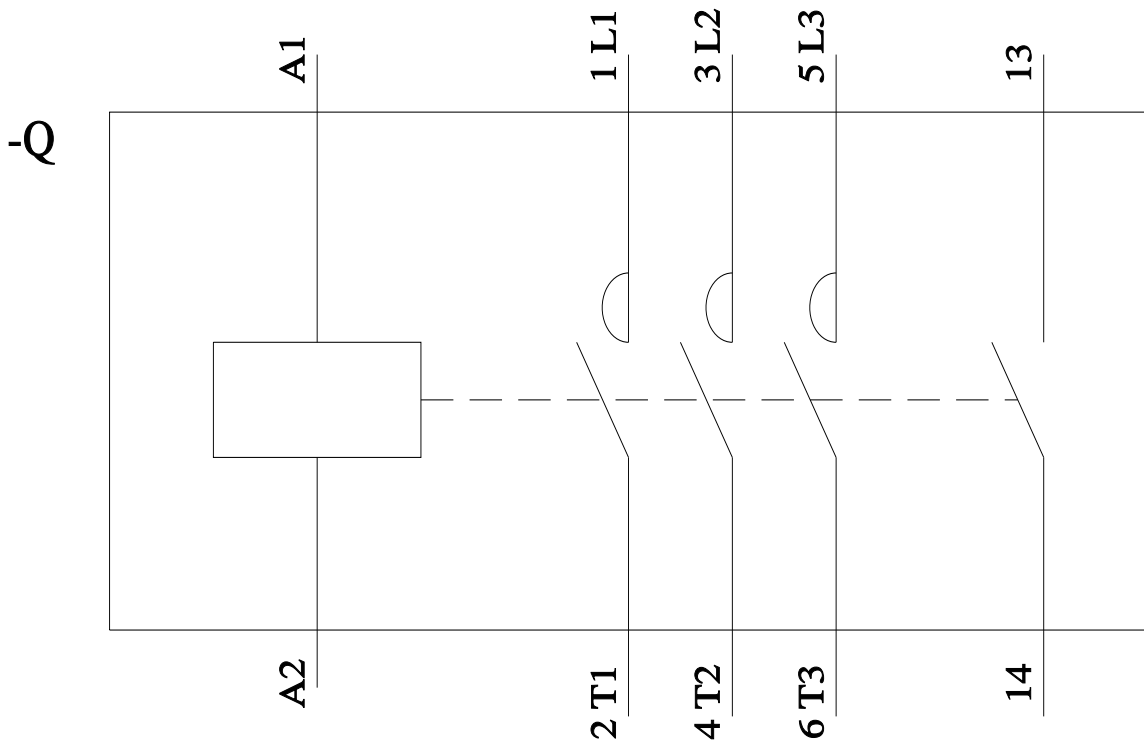
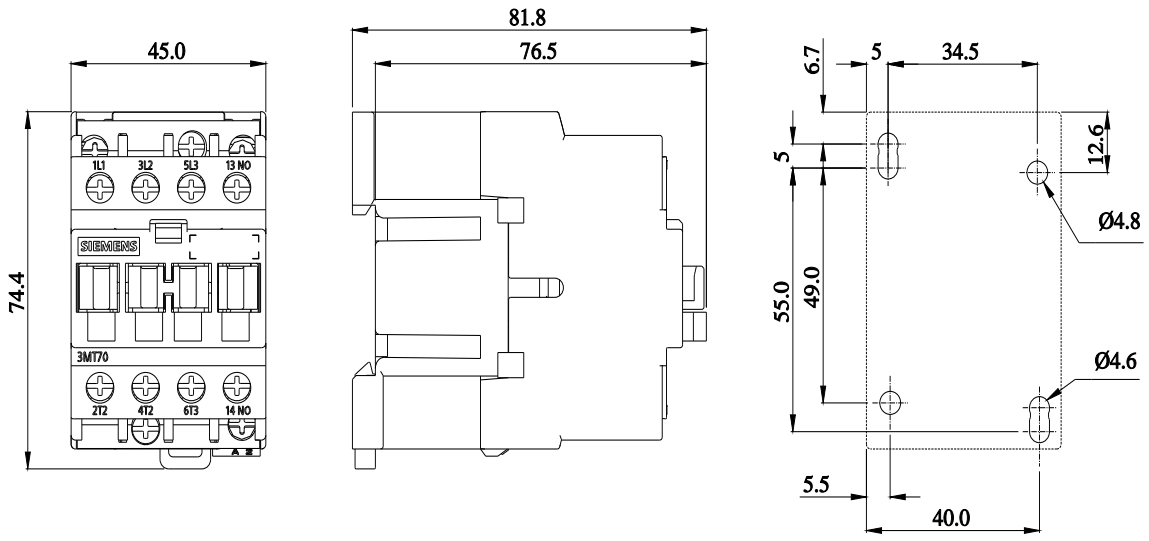
[http://www.automation.siemens.com/bilddb/cax\\_de.aspx?mlfb=3MT7010-0AA10-0AL2&lang=en](http://www.automation.siemens.com/bilddb/cax_de.aspx?mlfb=3MT7010-0AA10-0AL2&lang=en)

##### Characteristic: Tripping characteristics, I<sup>2</sup>t, Let-through current

<https://support.industry.siemens.com/cs/ww/en/ps/3MT7010-0AA10-0AL2/char>

##### Further characteristics (e.g. electrical endurance, switching frequency)

<http://www.automation.siemens.com/bilddb/index.aspx?view=Search&mlfb=3MT7010-0AA10-0AL2&objecttype=14&gridview=view1>



last modified:

2/24/2023

