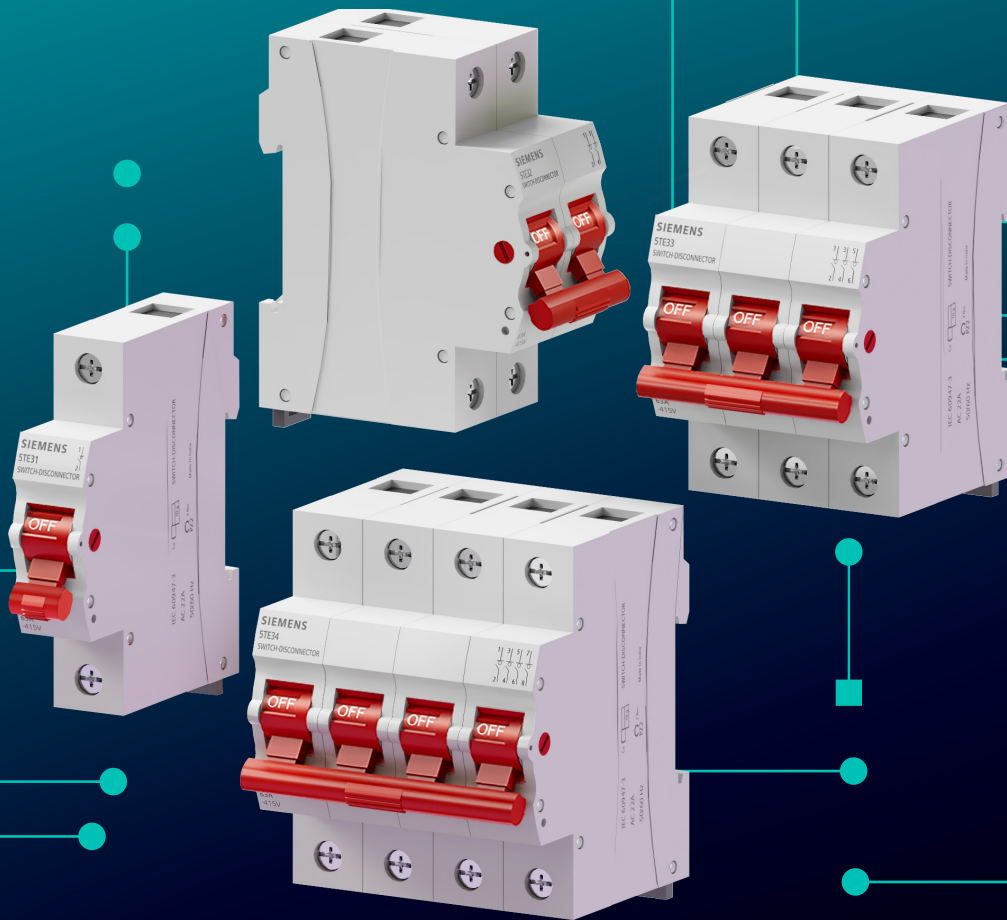


SIEMENS



5TE switch disconnectors

SINOVA The Power of **Simplicity**

Discover The Power of **Simplicity** with SINOVA

Backed by Siemens quality standards, SINOVA introduces exceptional ease of operation and cost-efficiency to electrical installations in buildings, utilities, industries, and infrastructure applications. Our low-voltage electrical products offer protection, control, switching, and metering capabilities that help promote efficiency across the value chain, optimizing OPEX, CAPEX, and reducing environmental impact. We are continuously driven to innovate and provide simple and reliable solutions. Inspired by efficiency and simplicity, we strive to empower industry professionals to streamline processes and complete projects quicker every time.



5TE switch disconnectors

Product **highlights**



Adaptable

Ideal for switching a variety of devices with mixed resistive and inductive loads in both residential and industrial applications.

IEC Safe

Complete isolation and safe system disconnection during maintenance work, ensuring the safety of personnel. Conforms to IEC 60947-3.



Easy to use

Our switch disconnectors offer easy termination options including cable, pin-type and fork-type busbars.

SINOVA The Power of **Simplicity**

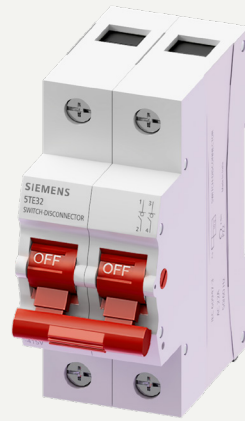
Overview

Our 5TE switch disconnectors function as the main switch in distribution boards and are used to physically disconnect all the phases. They ensure total isolation especially during maintenance, inspections, and emergencies to provide a safe work environment for the user. Made in compliance with IEC 60947-3, our switch disconnectors handle mixed loads, including moderate overloads as per utilization category AC-22A.



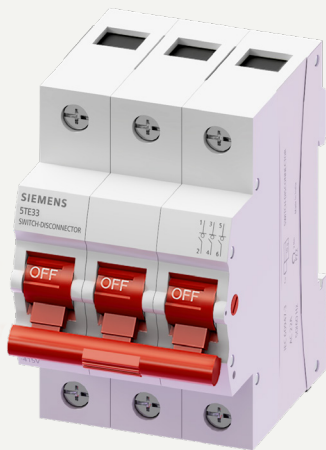
1 pole switch disconnector

Our 1 pole switch disconnector is crucial in single-phase circuits with specific loads, such as grinders and AC units. It is essential for disconnecting power before conducting repair work on home appliances and is usually found in the phase circuit.



2 pole switch disconnector

A widely used and essential starting device in all household distribution boards, our 2 pole switch disconnector is made for single-phase circuits. It is the main incomer above the MCB and a switch for maintenance or repairs for the entire house.



3 pole switch disconnector

Used in residential and commercial sectors, our 3 pole switch disconnector is suitable for 3-phase power supply systems, such as HVAC or small elevators.



4 pole switch disconnector

Our 4 pole switch disconnector is used for TPN (Three-Phase Neutral) systems up to 415V AC. It is ideal for any load, including the main electrical supply systems in buildings and industries.

Key applications

Our switch disconnectors are designed to safely and efficiently disconnect power sources in a wide variety of applications.



Industrial

- Machinery
- HVAC
- Lighting



Commercial buildings

- HVAC
- Pool cooling & heating
- Lighting



Residential

- Air conditioning units
- Home appliances
- Lighting
- Water heaters





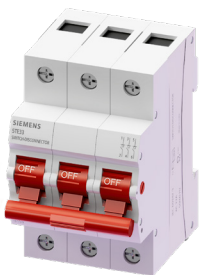
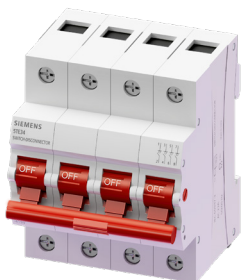
Technical specifications

5TE switch disconnectors

Parameters	Unit	Technical details					
Standard		IEC 60947-3					
Rated voltage Un V AC	V AC	1P - 240V; 2P, 3P, 4P - 415V AC					
Current rating	A	25A	40A	63A	80A	100A	125A
Rated power dissipation Pv – per pole max		2.3	2.3	2.5	5.5	5.5	5.5
Breaking capacity							
• Short circuit withstand capacity Icw (1 sec)	A	300	480	756	960	1200	1500
• Short circuit making capacity Icm	A	500	800	1200	1500	1800	2200
Rated insulation voltage	V AC	660					
Rated frequency	Hz	50/60					
Utilization category		AC-22A					
Overvoltage category		III					
Pollution degree		3					
Impulse withstand voltage	kV	4					
Degree of protection (front side)		IP20					
Endurance in cycles							
• Mechanical		10,000					
• Electrical		2000					
Handle end position (sealable wire)		Yes					
RoHS compliant		Yes					
Terminal details							
• Bi-connect terminal		Yes, at bottom					
• Terminal tightening torque N-m	N-m	2.5 - 3					
Conductor cross-section							
• Solid and stranded mm ²	mm ²	Up to 63A: 4 - 35 Above 63A: 4 - 50					
Ambient temperature	°C	-5°C to 55°C					
Storage temperature	°C	-25°C to 70°C					
Mounting position		Horizontal and vertical					

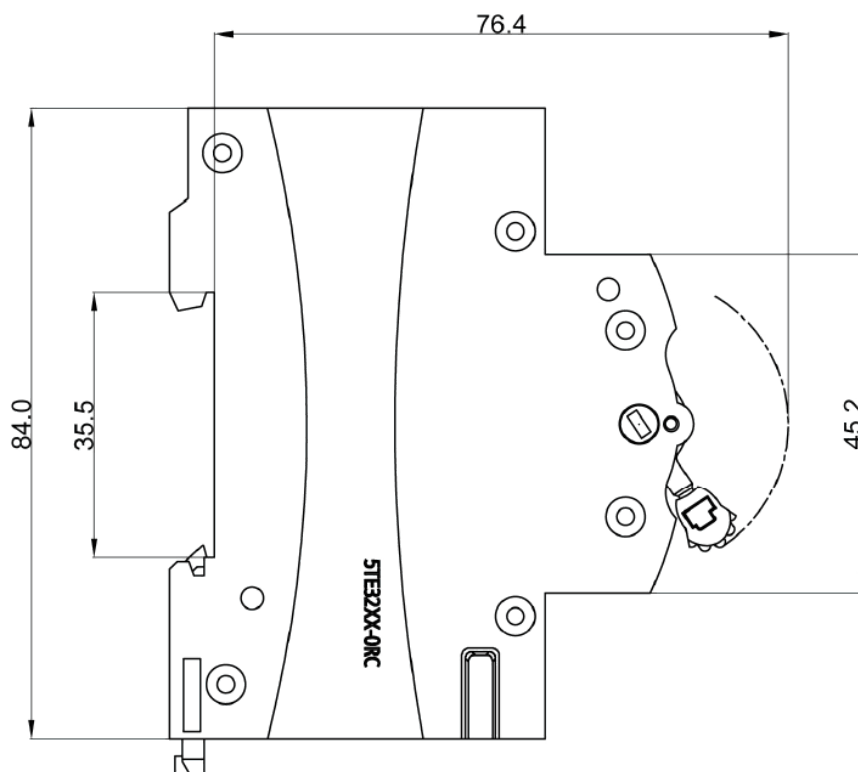
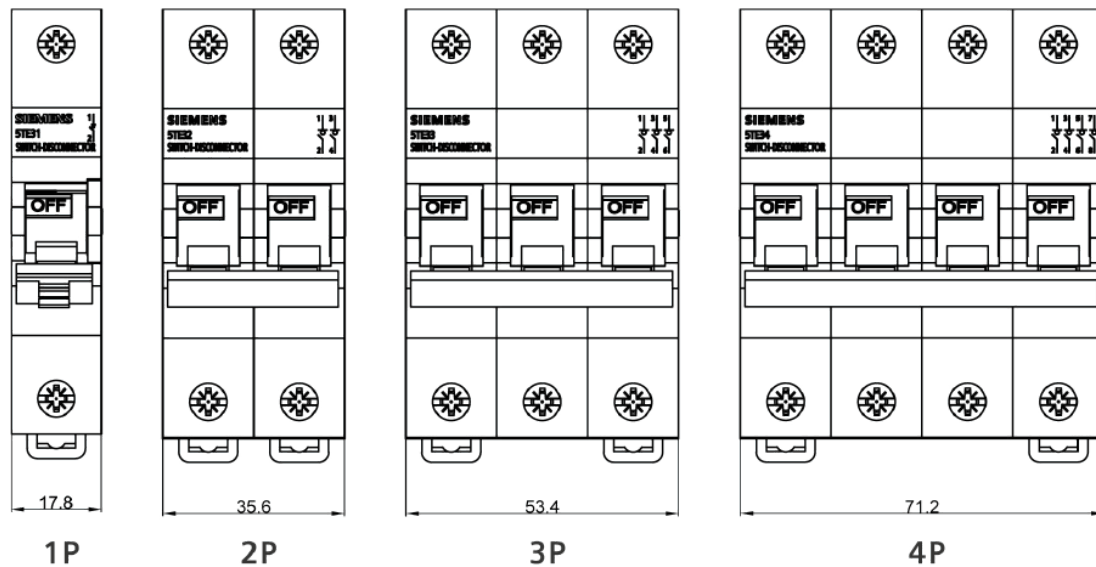
Selection & ordering data

5TE switch disconnectors

Product	In (A)	No. of poles	Article no.	Standard packaging No. of pieces	List price per PU (Per Unit)	Status
240V AC						
	25	1 pole	5TE3125-ORC	12		
	40		5TE3140-ORC	12		
	63		5TE3163-ORC	12		
	80		5TE3180-ORC	12		
	100		5TE3191-ORC	12		
	125		5TE3192-ORC	12		
415V AC						
	25	2 pole	5TE3225-ORC	6		
	40		5TE3240-ORC	6		
	63		5TE3263-ORC	6		
	80		5TE3280-ORC	6		
	100		5TE3291-ORC	6		
	125		5TE3292-ORC	6		
415V AC						
	25	3 pole	5TE3325-ORC	4		
	40		5TE3340-ORC	4		
	63		5TE3363-ORC	4		
	80		5TE3380-ORC	4		
	100		5TE3391-ORC	4		
	125		5TE3392-ORC	4		
415V AC						
	25	4 pole	5TE3425-ORC	3		
	40		5TE3440-ORC	3		
	63		5TE3463-ORC	3		
	80		5TE3480-ORC	3		
	100		5TE3491-ORC	3		
	125		5TE3492-ORC	3		

Dimension drawings

5TE switch disconnectors



Note: All dimensions are in mm.

SINOVA

The Power of **Simplicity**

Published by
Siemens Ltd

Smart Infrastructure
Electrical Products
R&D Building, 48,
Thane-Belapur Road
Thane 400708, India

Subject to changes and errors. The information given in this document only contains general descriptions and/or performance features which may not always specifically reflect those described, or which may undergo modification in the course of further development of the products. The requested performance features are binding only when they are expressly agreed upon in the concluded contract.